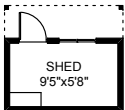
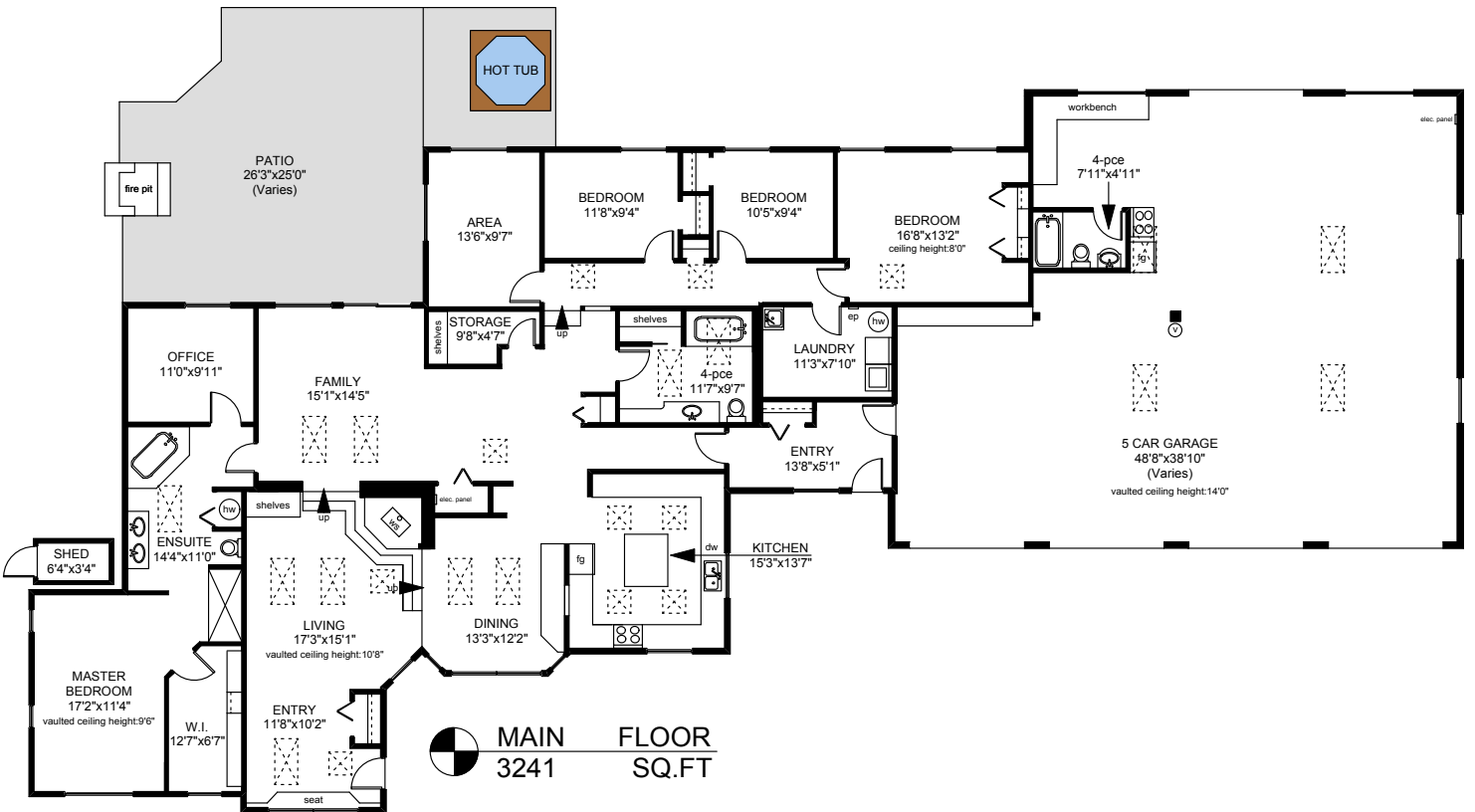
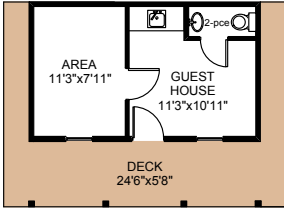
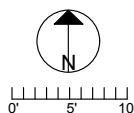


392 IVOR ROAD

 GUEST HOUSE
243 SQ.FT



	FINISHED SQ. FT.	UNFINISHED SQ. FT.	TOTAL SQ. FT.
MAIN	3241	0	3241
TOTAL	3241	0	3241
GARAGE	49	1716	1765
GUEST	243	0	243
SHEDS	0	93	93
DECK	0	191	191
PATIOS	0	685	685



PREPARED FOR THE EXCLUSIVE USE OF
THE NEAL ESTATE TEAM OF RE/MAX ALLIANCE

MEASURED ON: 05/09/16
DRAWING FILE: 13624

Tafe Measure VICTORIA, B.C.
Ph. 883.8894
www.tafemeasure.com